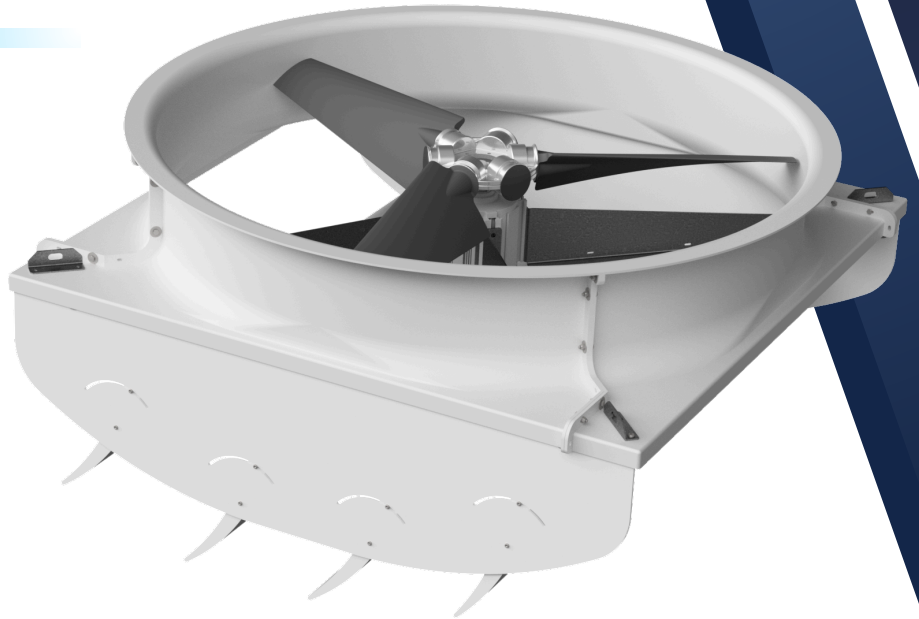


LOUVERED CIRCULATION FAN

Louvered circulation fans are ideal for dairy barns, promoting cow comfort and productivity by reducing heat stress, moisture buildup, and odors. They improve air quality, help control pests, and keep bedding dry by maintaining steady airflow. Designed for energy efficiency, they offer strong ventilation while lowering costs, and their adjustable louvers let you target airflow where it's needed most.



Built using corrosion resistant materials like fiberglass, HDPE plastic and galvanized steel, for years of use.



The product utilizes a cost-effective, variable speed ECM motor for precise environmental control, eliminating the need for an external VFD drive.



Adjustable louvers give you perfect control of air movement in your barn, allowing fresh air to be focused downward, where the animals are.



Four point chain mounting is a breeze due to the heavy duty mounting brackets.

FAN SIZE	HOUSING	DRIVE TYPE	HP/KW	VOLTAGE	PH
54"	Fiberglass	Direct Drive	3hp/2.2kw	230V-575V	1-3

Size

36 in

HP

1 hp

PH

1

VOLTS

115/230v

HZ

50/60

FLA

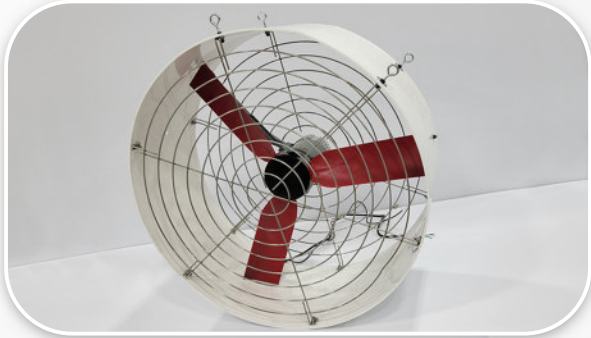
9.8/5.8

RPM

300-900 RPM

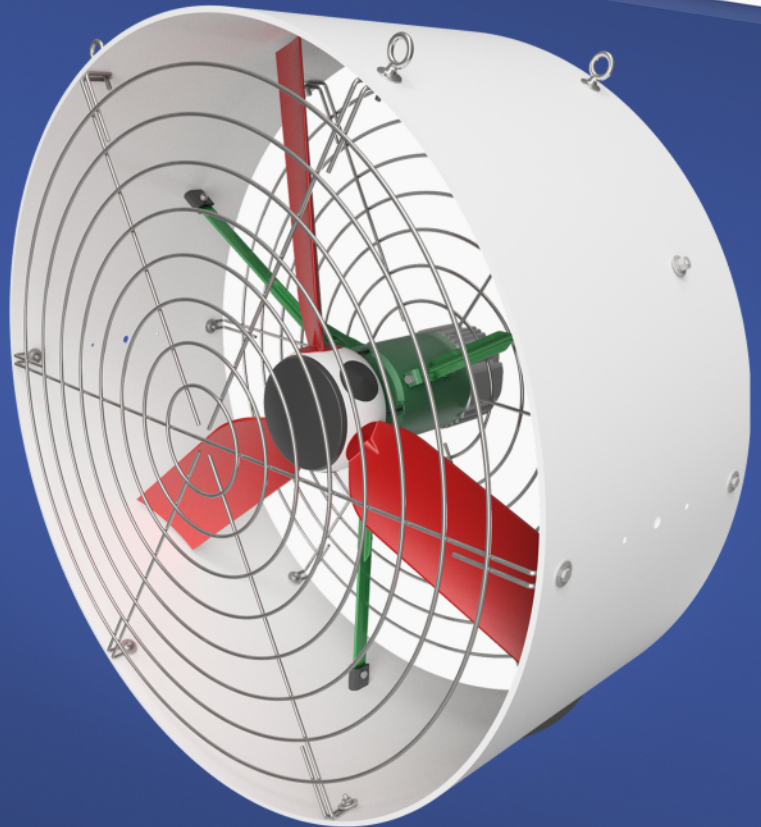
Speed Control

0/10v



- Optimized Air Circulation
- Energy Efficient
- Durable and weatherproof
- Customizable Settings
- Easy Installation
- Improved Livestock health

- Mount options are available for both chain mounting and wall mounting
- Stir Fan is available with a energy efficient ECM motor as well as a Multifan Motor



Upgrade your barn today with Better Air Stir Fans! Keep your livestock happy, reduce energy costs, & create the ideal environment for work & leisure.