

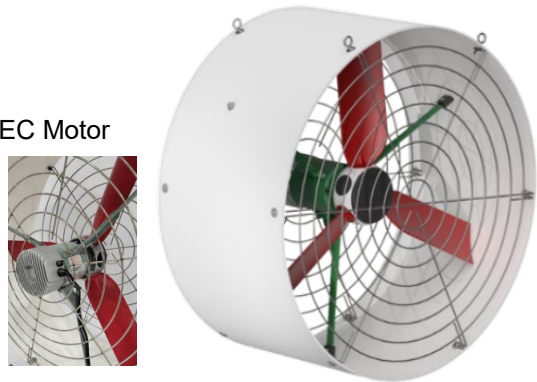
## Direct Drive Fans (EC) Electronically Commutated

For ALL EC fan quotes/project, please contact an Exacon sales representative to discuss the application prior to quoting a customer

### EC DIRECT DRIVE STIRFANS

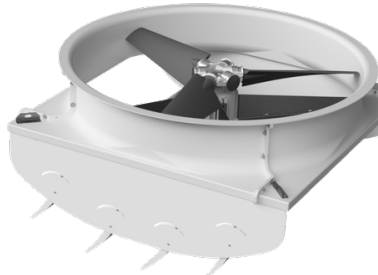
- Optimized Air Circulation
- Durable and waterproof
- Easy Installation
- Stir fan has energy efficient EC Motor
- Improved livestock health
- Customizable Settings

Technical specs. may change as we strive to provide the most efficient EC fans possible



DIA.	PART #	DESCRIPTION	COLOUR	HP/KW	VOLTS	FLA	PHASE
18"	E54-4215	CF18EC-GEN STIRFAN	WHITE	0.33	240	1.3	1
24"	E54-4218	CF24EC-GEN STIRFAN	WHITE	0.5	240	2.2	1
36"	E54-4136	CF36EC STIR FAN	WHITE	1.00	115/230	9.8/5.8	1

### 54" EC DIRECT DRIVE LOUVERED AIR BLASTER



- The product utilizes a cost-effective, variable speed ECM motor for precise environmental control, eliminating the need for an external VFD drive
- Built using corrosion resistant materials like fiberglass, HDPE plastic and galvanized steel, for years of use.
- Louvered circulation fans are ideal for dairy barns, promoting cow comfort and productivity by reducing heat stress, moisture buildup, and odors. They improve air quality, help control pests, and keep bedding dry by maintaining steady airflow. Designed for energy efficiency, they offer strong ventilation while lowering costs, and their adjustable louvers let you target airflow where it's needed most.

DIA.	PART #	DESCRIPTION	COLOUR	HP/KW	VOLTS	PHASE
54"	E54-4254-1	AIR BLASTER	WHITE	1.5	230	1
54"	E54-4254-3	AIR BLASTER	WHITE	1.5	230	3

All prices and availability are subject to change without notice due to supplier increases, market conditions, fuel costs, exchange rate fluctuations, and other economic factors; please contact our office for a current quotation to confirm pricing